

OUR VISION

Growth Through Learning

OUR MISSION STATEMENT

Cambridge Primary School strives to equip and empower lifelong learners that contribute collaboratively to build a positive, inclusive, and successful school and community.



Cambridge Primary School

Respect-Integrity-Self resilience -Excellence.

MESSAGE FROM THE PRINCIPAL

Jane Budd



Welcome to another busy fortnight at Cambridge Primary School. Our ANZAC day service lead by our year 6s was a poignant moment, and I extend my gratitude to our community who came to honour our falling soldiers and recognise the ongoing sacrifices of our current servicemen and woman. I was particularly proud of the respectful our students displayed throughout the ceremony. A special acknowledgement to Jeff Gaul from Ray White Real Estate for generously donating the wreath.

I've had the opportunity to visit classrooms of the past fortnight to speak to several students about their learning journey. Our students are working hard on their learning goals with the guidance of their teachers. Some students shared with me their strategies for achieving these goals, which has been wonderful to hear. I encourage parents to check in with their child/children regarding their learning goals and support them with a growth mindset, fostering perseverance in being successful in achieving their goals. Reminder that our parents can schedule a time either by phone or face to face to meet with teachers to discuss their child's learning progress and learning growth throughout the term.

Thank you to all the families who joined us for our "Visual Arts Expo." It was truly heartwarming to see such a fantastic turnout, and our students were thrilled to showcase their artwork to their family members. A special thank you goes to Mrs. Menhennet and Mrs. Russell for their dedicated efforts in organising this event and making it a success. Your hard work and commitment are truly appreciated.

Our Mother's Day/Special persons' stall was a huge success, and I am positive there will be lots of happy mums, grandmas, or significant others on Sunday. Our students' leaders were part of sourcing the goods for our stall and did a wonderful job. Thank you to Fiona, and her wonderful team of volunteers', for organising the stall.

Over the coming weeks, we will be having a parent information session around Assessment. The Information sessions will provide an exciting opportunity to learn how assessment works at Cambridge Primary School. The sessions serve as an opportunity for parents and family members to gain an understanding of our school's approach to assessment. Please keep an eye out via compass for more information. We will offer 2 sessions, and both will run for around 45 minutes.

Education Week in Victoria is next week with the theme, 'Spotlight on STEM', this highlights the importance of Science, Technology, Engineering, and Mathematics (STEM) in our everyday lives, in the classroom and beyond. Keep an eye out on compass to see what your child/children class is doing throughout the week to celebrate Education Week.

OUR VISION

Growth Through Learning

OUR MISSION STATEMENT

Cambridge Primary School strives to equip and empower lifelong learners that contribute collaboratively to build a positive, inclusive, and successful school and community.

SCHOOL COUNCIL

Last term we held our School council AGM, and I would like to welcome our new members, Amanda McCallan-Simpson & Azizur Rahman

President	Louie Stefanovski
Vice President	Sharon Brincat
Secretary	Linda Roach
Community member	Jeff Gaul
Treasure	Angela Connolly

SAFE AND ORDERLY ENVIRONMENT

To ensure our students are prepared for learning each day, we kindly ask the support of all families. Upon arrival and departure from school, we encourage students to be ready for learning. Each morning, students are expected to enter the school grounds and walk straight to their classrooms, lining up to await their teacher. We are strongly encouraging students not to run or play on the playgrounds. A calm start to the day sets the stage for effective learning. Similarly, at the end of the day, we ask that students exit calmly with their families. Your cooperation in reinforcing these expectations is greatly appreciated. Thank you for helping us create a conducive learning environment for all our students.

SAFE GETTING TO SCHOOL

A friendly reminder to our families: students who ride their bikes and scooters to school are required to wear a helmet. Last term, we conducted a helmet blitz, and we will resume this initiative this term to ensure the safety of our students while riding to and from school. Your support in reminding your child/children to wear their helmets is greatly appreciated. Thank you for helping us keep our students safe.



SCHOOL GRIEVANCE PROCESS

The school has a set grievance process. Please ensure that you never approach a child to discuss any concerns or issues. Please seek support from your child’s classroom teacher first, or a member of leadership, if you feel the matter is more serious. We expect our students to always show our school values within our community and we encourage our parents to support the school by modelling our school values as well.

OUR VISION

Growth Through Learning

OUR MISSION STATEMENT

Cambridge Primary School strives to equip and empower lifelong learners that contribute collaboratively to build a positive, inclusive, and successful school and community.

IMPORTANT DATES – Term two 2024	
Thursday May 9	District Cross Country
Thursday May 9	Mother`s Day Stall
Friday May 10	Breakfast Club
Friday May 10	Grade 6 Interschool Sport
Friday May 10	Assembly Big Gym 2:30pm
Monday May 13 – Friday May 17	Education Week
Friday May 17	Grade 6 Interschool Sport
Monday May 20	STEM Explorers Open Afternoon 3:30pm
Friday May 24	Grade 6 Interschool Sport
Monday May 27	Luke Kennedy – Guest Speaker
Monday May 27 – Wednesday May 29	Grade 4 Camp
Tuesday May 28	Grade 2 Science works Excursion
Tuesday May 28	Prep Firefighter Visit
Tuesday May 28	Year 3 Learning on Country
Friday May 31	Breakfast Club
Friday May 31	Grade 6 Interschool
Friday May 31	Assembly Big Gym 2:30pm
Wednesday June 5	Prep Police Visit
Friday June 7	Curriculum Day – No students
Monday June 10	Public Holiday – Monarch`s Birthday
Wednesday June 12	CPS Chess Championships
Friday June 14	Grade 6 Interschool Sport
Wednesday June 19	Prep Melbourne Zoo Excursion
Friday June 21	Breakfast Club
Friday June 21	Grade 6 Interschool Sport
Friday June 21	Assembly Big Gym 2:30pm
Wednesday June 26	Parent Teacher Interviews
Friday June 28	Last Day Term 2, 2024 (1:45pm)
IMPORTANT DATES – Term Three 2024	
Monday July 15	First day Term 3

CURRICULUM NEWS

Parent Teacher will be held on the 26th of June with bookings opening on the 19th of June. PTIs are a great opportunity to discuss your child's semester 1 report, touch base on the work they have been completing, and discuss their current goals. PTI's will be 10mins sessions with teachers trying their best to remain on time, this may mean that if you are late your interview may be cut short or rescheduled for another day.

Semester 1 (Term 1 and 2) will be available before Parent Teacher Interviews via compass. If you are unsure of how to access your reports, please stop by the office or IT office.

OUR VISION

Growth Through Learning

OUR MISSION STATEMENT

Cambridge Primary School strives to equip and empower lifelong learners that contribute collaboratively to build a positive, inclusive, and successful school and community.

One of the most common questions we have regarding reports is around the ratings at the bottom of the progression points. The expected outcome for students is to receive a C rating. The C rating shows that they are working at the expected level, for a student to receive an A they need to be working a minimum of 18 months ahead across all subjects and areas.

Ratings

A	Well above the expected level
B	Above the expected level
C	At the expected level
D	Below the expected level
E	Well below the expected level

Scale Definition

The Victorian Curriculum standard 5 point scale. Ranging from E - A inclusive. Where E is two standard points below the expected level and A is two standard points above the age expected level.

AROUND THE SCHOOL

Year 3:

"We are doing information text. We choose an animal and write facts about it. I have chosen Bats because I know more about Bats. Vampire Bats drink blood of cows and other animals. I have learned that information texts have real pictures" – Krisha 3C

"We are working on some facts for our information, we are conclusion and introduction. We are working on the rule of 3, were you put three good facts about the topic" – Anahira 3D

"Information reports are writing. We are working on three facts and good subtitles for those three facts. We are working on writing a conclusion"- Jack 3D

"We have been subtraction using number lines. It is a little trick because it is new to me, and I haven't learnt it yet. We have been looking at different strategies we can use in addition and subtraction. We have also been writing information reports." Wali 3C

Jess Green – Assistant Principal

WELLBEING AND INCLUSION

The ATOSS is a voluntary annual student survey offered by the Department of Education to assist schools and the department to gain an understanding of students' perceptions and experience of school. We value student voice as a means to improving student engagement, wellbeing and quality instruction and will be asking your child about their thoughts and feelings in relation to their school, their learning, peer relationships, resilience, bullying, health and wellbeing, physical activity, and life in general.

This year, the survey will be conducted at Cambridge from Wednesday 8th May until 31st May.

What are the benefits?

Our students get to tell us what they think and how they feel! This survey has been running for nearly 20 years and is invaluable in helping schools understand student views to plan programs

OUR VISION

Growth Through Learning

OUR MISSION STATEMENT

Cambridge Primary School strives to equip and empower lifelong learners that contribute collaboratively to build a positive, inclusive, and successful school and community.

and activities to improve your child's schooling experience. The survey responses also help the Department of Education understand how student's learning experiences can be improved.

What will my child be asked to do?

Your child will be invited to complete the survey **online during class time** using a purpose built secure online survey tool. It is important to note that we are not in any way "testing" your child. Please note:

- Student participation in the survey is voluntary and students may withdraw at any time.
- The survey is available in a variety of different versions to enable all students to participate.
- The survey will be completed in one single session.

How is my child's confidentiality protected?

Your child will be provided with a unique login to complete the survey from their teacher. The student login is an assigned identifier that will be used by the department to link data for analysis and research purposes only.

SUBWAY ORDERS

Just a reminder that Subway lunch orders need to be received by Friday 5pm prior to the Monday date.

If you submit an order over the weekend, the Canteen Hub system will accept your order but then it will be refunded back to you on the Monday due to being after the deadline.

Please note in any situation that this happened we will always provide an emergency lunch for any student that does not have lunch.

Our next Subway Lunch is scheduled for Week 8 Monday 3rd June – orders are now open. Below are some pictures of our amazing Student Leaders ensuring that the 200 Subway orders we did received made their way to the rightful owners. Thanks to our Student Leaders for their ongoing work around the school.



RIDE / WALK to SCHOOL DAY

This Friday 10th May is walk to school day. We encourage all students who are able to walk, skip, run, ride or scooter to school to do so. This promotes students being healthy and active now as young people so that they can continue to be active and healthy as they reach adulthood.

OUR VISION

Growth Through Learning

OUR MISSION STATEMENT

Cambridge Primary School strives to equip and empower lifelong learners that contribute collaboratively to build a positive, inclusive, and successful school and community.

RECONCILIATION WEEK

National Reconciliation Week (NRW) is a time for all Australians to learn about our shared histories, cultures, and achievements and to explore how each of us can contribute to achieving reconciliation in Australia. The theme is “Now more than ever” and over the next few weeks students will explore elements of Indigenous history. In their Social Emotional Learning (SEL) lessons.

Jarrod Bateup – Assistant Principal

VISUAL ART

Greetings Cambridge Families and Wider Community,

Mrs Menhennet and I would like to THANK YOU ALL for coming this afternoon to celebrate Visual Arts at Cambridge Primary School.

It was a true delight to see you all enjoying our Cambridge Kids LOVE Visual Arts Expo.

For those who missed out, or for those who couldn't get a close enough look because of the crowds of people, we have GREAT NEWS: You will be able to visit the Expo after school this week and on the Parent-Teacher Conference. In fact, the display will be up all term for you to pop in and have another look, and a chance to get a photo in front of the Giant Heart Photo Wall.

We have attached a link to the Official Expo Padlet for you to enjoy:

https://padlet.com/russell_lorna_m/cambridge-kids-love-visual-arts-expo-jcf01h014euap725

Please feel free to add your own photos of the expo for us all to enjoy,

but only if you are happy for them to be shared on social media.

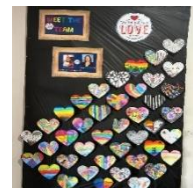
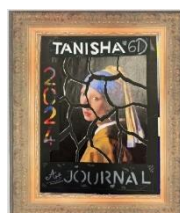
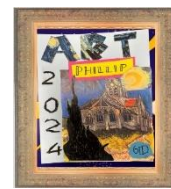
Lastly, we have also added a link to a slideshow of the Expo- fingers crossed that it works!

https://padlet.com/russell_lorna_m/cambridge-kids-love-visual-arts-expo-jcf01h014euap725/slideshow

Kindest Regards,

Mrs Russell and Mrs Menhennet

Visual Arts Teachers



OUR VISION

Growth Through Learning

OUR MISSION STATEMENT

Cambridge Primary School strives to equip and empower lifelong learners that contribute collaboratively to build a positive, inclusive, and successful school and community.

GRADE 3



“Well done to our Grade 3 students who have received a RISE values award for their hard work in class, showing leadership skills, showing resilience and overall being a positive example for other grade 3 students”

GRADE 4



In Week 5 we will have our term 2 community event

See compass for more information.

Grade 4 RISE Award



winners:
Itaria, Mariyah, Francis



Pen license awards: Kia, Reya, Erin, Michael, Razin, Pasha

GRADE 6



Year 6 RISE award winners for week 3 were:

Respect Award – Jude Drummond 6D: At camp, he was respectful to teachers, students, parents and camp staff.

Integrity Award – Baxter Sirotic 6E: Displaying maturity and honesty during classroom discussions.

Self Resilience Award – Omar El Mir 6A: At camp, he demonstrated an ability to overcome his initial fears and was able to give all activities a fair go.

Excellence Award – Musa Mir 6B: Consistently striving to be his best and encouraging those around him.

Growth Mindset Award – Brooke Moore 6C: Showing perseverance with all that she does and always striving to achieve her best.

Respect – Integrity – Self Resilience – Excellence Respect – Integrity – Self Resilience Excellence

OUR VISION
Growth Through Learning

OUR MISSION STATEMENT

Cambridge Primary School strives to equip and empower lifelong learners that contribute collaboratively to build a positive, inclusive, and successful school and community.

CANTEEN

If you would like to order lunch for your child, you can do this through Flexi Schools via the link www.flexischools.com.au or you can write your child's name, grade and what they would like to order on a brown paper bag with **NAME, CLASS & correct MONEY ENCLOSED**. A reminder for If you are ordering through Flexi schools to please make sure you have updated your child's year level for this year. Icy poles and slushies are only available at lunch time. The icy poles prices start at \$1.00 through to \$3.00. Canteen price list is available on the Cambridge website.

OUR SCHOOL PARTNER

RayWhite

Looking to buy or sell your home?

Contact your local area specialist today.
Jeff Gault
 0434 270 790
jeff.gault@raywhite.com

For every home sold through mention of the school, Cambridge Primary School will receive a generous donation.
raywhiteverribee.com

COMMUNITY NEWS

CAMBRIDGE BASKETBALL CLUB
 Cambridge Basketball Club wants you!

Are you looking for a fun interactive sport for your son or daughter to play this winter? Wyndham Basketball Association Winter Season is fast approaching, commencing April 2024.

Cambridge Basketball Club are looking for players of all ages to join this great sport.

For more information on the above please contact our registrars:

WE WANT YOU!

Boys U8-U14 Amanda - ph. 0423 531 855
 Boys U16-U23 Dave - ph. 0419 313 309
 Girls U8-U23 Malinda - ph. 0424 979 956
 Email registrar@cambridgebasketball.com.au

Website: www.cambridgebasketball.com.au

THE FATHERING PROJECT PRESENTS...

TRIVIA AFTERNOON

Following the huge success of our launch in term 1, be sure to come along to our next Fathering Project event! Simply click attending on the portal or sign up using the QR code!

WIN PRIZES & CRIFTER CONIS!

MONDAY 27TH OF MAY
 3:30pm - 4:30pm - Small Gym

Cambridge Primary School | **the fathering project** Changing Children's Lives

AT HOME TIPS
 to support your child

STAYING HEALTHY INSIDE: TIPS FOR WINTER HEALTHY TIPS

1. **Set a Consistent Routine:** Establishing a regular bedtime for the whole family promotes better sleep quality and overall well-being. Aim for children to get 10 hours of sleep per night, while adults typically need 7-9 hours.
2. **Wind Down Together:** Create a calming atmosphere in your child's bedroom by dimming the lights, turning off screens, and engaging in relaxing activities like reading or listening to soft music. This signals to your bodies that it's time to wind down.
3. **Limit Screen Time:** The blue light emitted by screens can interfere with the body's natural melatonin cycle, making it harder to fall asleep. Encourage your family to power down devices at least an hour before bed to promote better sleep.
4. **Invest in Quality Bedding:** Ensure your child's bedding is clean, comfortable, and suitable for the season. Consider using hypoallergenic pillows and blankets to reduce allergen exposure.
5. **Create a Conducive Sleep Environment:** Ensure that bedrooms are conducive to quality sleep by keeping them cool, dark, and quiet. Invest in comfortable bedding and pillows for extra support.
6. **Stay Consistent on Weekends:** While it's tempting to let bedtime routine slide on weekends, sticking to a consistent schedule even on days off helps regulate your child's internal clock, leading to better sleep on weekdays.

By prioritizing a healthy bedtime routine, you're not only setting your family up for better sleep but also fostering stronger bonds and promoting overall well-being. So, let's commit to making bedtime a peaceful and restful time. Sweet dreams, goodnight, and goodnight!

Wishing you sweet dreams and a great night's sleep!

ATTENTION PARENTS AND CAREGIVERS!

well said - CLINIC

PRESENTS: MORE THAN WORDS - THE HANDED PROGRAM FOR PARENTS OF AUTISTIC CHILDREN OR CHILDREN WITH SOCIAL COMMUNICATION DIFFICULTIES.

PRESENTED BY OUR SENIOR SPEECH PATHOLOGIST, LISA SCARF.

WHAT IS HANDED?

HANDED IS AN INTERNATIONALLY RECOGNIZED, RESEARCH-BASED SPEECH THERAPY PROGRAM DESIGNED SPECIFICALLY FOR PARENTS AND CAREGIVERS.

PROGRAM INFORMATION:

- 5 SESSIONS (50 MINUTES EACH)
- \$100 (FREE FOR PARENTS ON GOVERNMENT BENEFITS)
- EXPLORES CHILDREN'S LANGUAGE DEVELOPMENT
- INTERACTIVE & PRACTICAL
- ONLINE & IN-PERSON PARTICIPATION OPTIONS
- FINES CAN BE USED TO ATTEND
- 100% SATISFACTION GUARANTEE

QUESTIONS AVAILABLE:

IF YOU'RE HAVING TROUBLE READING THIS, PLEASE CONTACT US AT: info@wellsaidclinic.com.au

WELLSAID CLINIC
 100% SATISFACTION GUARANTEE

Cambridge

WELLBEING AND INCLUSION
 newsletter

FRONT OR WELCOMING HANDS

At Cambridge Primary School, we are committed to creating a safe and inclusive environment for all our students. Our Wellbeing and Inclusion newsletter is a key resource for parents and caregivers, providing valuable information on how to support your child's social and emotional development. We encourage you to read this newsletter regularly to stay up-to-date on the latest initiatives and resources available at Cambridge Primary School.

SUPPORT SPOTLIGHT

Have your child made a special friend? Great! Social groups are a fantastic way to help your child build friendships and develop social skills. We encourage you to support your child's participation in these groups and provide encouragement and praise for their efforts. Please let us know if we can help in any way.

MONTHLY EVENTS

Breakfast Club: Friday 10:00 AM

GRATE

Gratitude journaling is a simple yet powerful practice that can help your child develop a positive mindset and appreciate the good things in their lives. We encourage you to encourage your child to keep a gratitude journal and share their thoughts with you. Please let us know if we can help in any way.

FREE INCLUSIVE MULTI-SPORT FUN AFTERNOON

For people with disability to take part with their family and friends.

- Come enjoy Cricket, Netball, Basketball, Badminton, Table Tennis, Soccer, Tennis and more.
- Suitable for all ages.
- Bookings essential.

Where: High School, 85 Ballan Rd, North Geelong
When: Monday 12 May, 2:00pm to 5:00pm

For more information: WWW.WYNDHAMVIC.GOV.AU/INCLUSIVESPORT

wyndham.vic

SPORT 4 ALL

ACTIVE